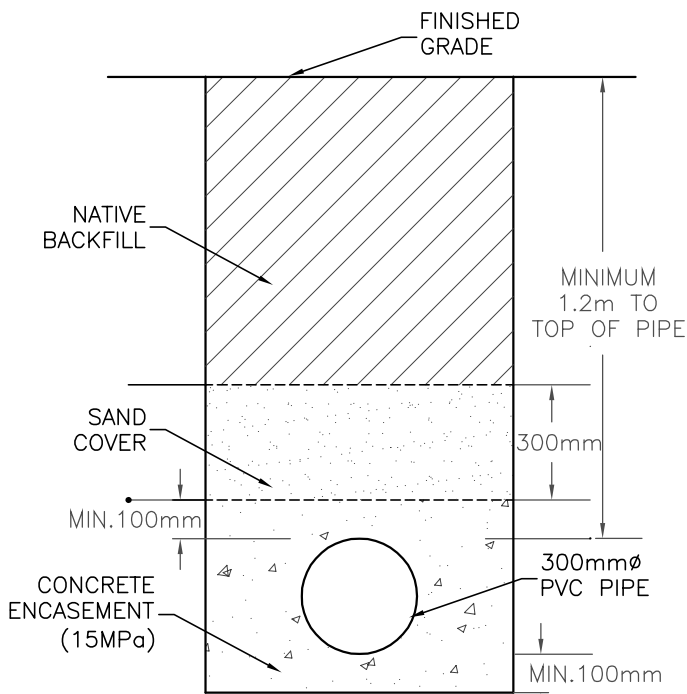
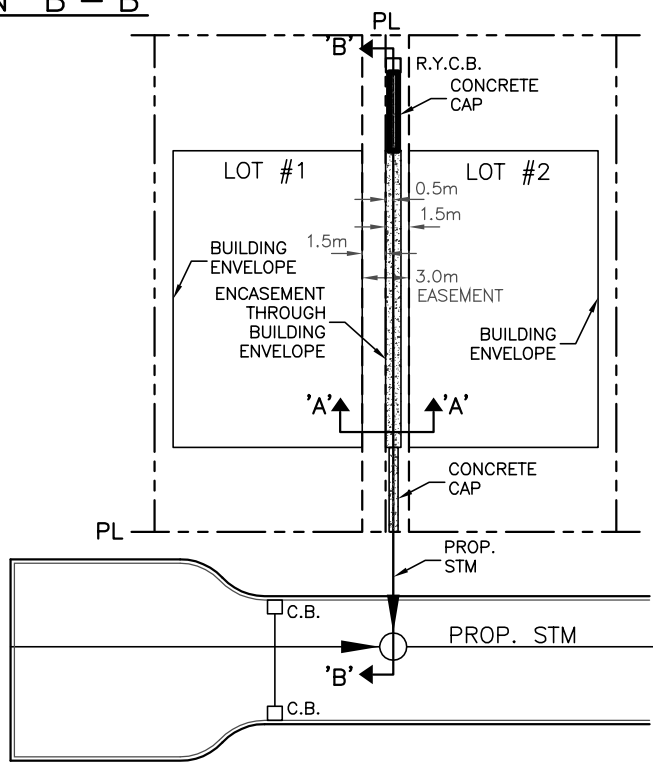


SECTION 'B'-'B'



SECTION 'A'-'A'



NOTES:

1. PIPE TO ENTER CATCHBASIN AT RIGHT ANGLE.
2. 300mm ϕ PVC OR CONCRETE PIPE TO BE USED FOR REAR YARD CATCHBASIN
3. ALL CONCRETE PIPE SHALL BE A MINIMUM STRENGTH OF 65D.
4. ALL PVC PIPE SHALL BE A MINIMUM STRENGTH OF SDR 28 OR EQUIVALENT.
5. FOR BEDDING DETAILS SEE TOWN OF WHITBY SPECIFICATIONS.
6. CONNECTION TO STORM MAIN SHALL BE CORED AND A PVC MANUFACTURED BELL JOINT W/SAND COATING USED OR THE STORM MAIN SHALL HAVE AN APPROVED MANUFACTURED TEE.
7. CB ADJUSTMENT UNITS (MODULOCK) SHALL BE PARGED ON THE OUTSIDE AND COVERED IN BITUMINOUS PAINT.
8. CONCRETE CAP NOT REQUIRED IF CONCRETE PIPE IS USED OR IF PIPE IS BELOW UNDERSIDE OF FOOTING.

ALL DIMENSIONS IN MILLIMETRES EXCEPT WHERE NOTED

THE CORPORATION OF THE TOWN OF WHITBY

PUBLIC WORKS DEPARTMENT

CHECKED	<i>AB</i>
APPROVED	<i>AB</i>
SCALE:	N.T.S

REAR YARD CATCHBASIN CONNECTION

DWG. DATE:	JULY 2002
REVISION No.:	1
REVISION DATE:	MAY 2006
DWG No.	107.10